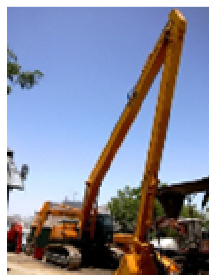
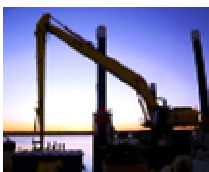


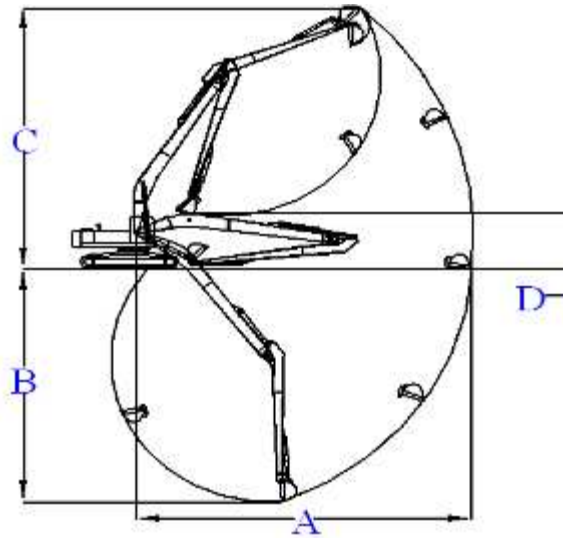
With manufactures experience in designing and manufacturing of long reach , you can now maximize your ROI (Return On Investment) on your existing fleet of excavators. Hundreds of customers have realized the value of long reach attachment where standard boom failed to get the necessary job done. Our long reach boom can help you to achieve more than 50% digging depth and forward reach over a standard boom, saving you valuable cost and time, and maximizing your bottom line. Only structural grade tensile steel is used in our boom and stick construction, and we do design it with various grades of tensile steel depending on the nature of the application. We supply long reach packages for various excavator models ranging from 20 to 160 metric ton.

The decades in designing a reliable solution at the given price point. The many years of practical experience in fabrication and field testing have provided us with a solid foundation in helping our customers to customized long reach solutions for their application needs.

Long reach front is an ideal solution for river and sea dredging either on land or barge, pond excavation and maintenance, deep foundation excavation, drainage construction, distant digging, etc.

There is no customized component and part used in our attachment, we design it with commonly available off the shelf components where customers can easily obtain from their local Caterpillar, Komatsu, Hitachi and Kobelco dealer





Excavator Operating Weight	Length		A Max. Reach		B Max. Digging Depth		C Max. Height		D Boom Height		Approximate Bucket Capacity	
	m	ft	m	ft	m	ft	m	ft	m	ft	m ³	Yard ³
20 ton (44,000 lb)	15.5	50'	15.30	50' 2"	12.50	41' 0"	14.22	46' 8"	2.50	8' 7"	0.50	0.65
	16.5	53'	16.20	53' 2"	13.15	43' 2"	14.85	48' 9"	2.50	8' 7"	0.50	0.65
	17.0	55'	16.80	55' 1"	13.64	44' 9"	15.25	50' 0"	2.50	8' 7"	0.40	0.52
22-25 ton (48,400-55,000 lb)	16.5	53'	16.20	53' 2"	13.15	43' 2"	15.00	49' 3"	2.70	8' 11"	0.60	0.78
	17.0	56'	17.10	56' 1"	13.85	45' 5"	15.60	51' 2"	2.70	8' 11"	0.60	0.78
	18.0	59'	18.00	59' 1"	14.60	47' 11"	16.30	53' 6"	2.70	8' 11"	0.50	0.65
28-30 ton (61,600-66,000 lb)	18.5	60'	18.30	60' 0"	16.35	53' 8"	16.62	54' 6"	2.90	9' 7"	0.70	0.91
	20.0	65'	19.85	65' 1"	17.25	56' 7"	17.40	57' 1"	2.90	9' 7"	0.60	0.78
33-35 ton (72,600-77,000 lb)	20.0	65'	19.85	65' 1"	16.30	53' 6"	16.70	54' 9"	3.40	11' 0"	0.70	0.91
	21.0	68'	20.80	68' 3"	17.00	55' 9"	17.48	57' 4"	3.40	11' 0"	0.70	0.91
40-45 ton (88,000-99,000 lb)	21.0	68'	20.80	68' 3"	16.95	55' 7"	19.00	62' 4"	3.60	11' 8"	0.85	1.11
	22.0	72'	22.00	72' 2"	17.90	58' 9"	20.10	65' 11"	3.60	11' 8"	0.80	1.04
50-55 ton (110,000-121,000 lb)	23.0	75'	23.00	75' 5"	18.36	60' 3"	16.50	54' 1"	3.80	12' 6"	1.00	1.30
60-65 ton (132,000-143,000 lb)	24.0	78'	24.00	78' 3"	18.80	61' 8"	20.00	65' 7"	4.10	13' 6"	1.40	1.82
70-75 ton (154,000-165,000 lb)	25.0	82'	25.00	82' 0"	19.20	62' 11"	21.00	68' 10"	4.60	15' 1"	1.40	1.82
80-85 ton (176,000-187,000 lb)	25.0	82'	25.00	82' 0"	19.20	62' 11"	21.00	68' 10"	4.70	15' 5"	1.50	1.95
100-110 ton (220,000-242,000 lb)	27.0	88'	27.00	88' 7"	20.00	65' 7"	24.00	78' 8"	5.00	16' 5"	1.60	2.08
	28.0	92'	28.00	91' 9"	21.00	68' 10"	25.00	82' 0"	5.00	16' 5"	1.40	1.82
120-130 ton (154,000-165,000 lb)	28.0	92'	28.00	91' 9"	21.00	68' 10"	25.00	82' 0"	5.50	18' 1"	1.60	2.08
	29.0	95'	29.00	95' 1"	22.00	72' 2"	25.50	83' 7"	5.50	18' 1"	1.40	1.82

* The above specifications are for reference only, actual working range may vary from machine models

** Specifications are subject to change without prior notice



A simple reconfiguration of mounting the hydraulic cylinder/ram at the underside of the stick/dipper arm would transform a typical long reach attachment to a simple high reach boom for demolition application. A simpler and cost down version of a typical 3-piece demolition boom. A 2-piece demolition boom is also less taxing to control and operate, and

operator can get the necessary job accomplished without going through major re-training, saving valuable time and cost.

It is also an excellent solution for slop forming where standard boom fall short in this respect.



All long reach package are professionally packed on metal rack for ease of transportation, hauling, handling and maximizing storage space. For containerized transportation, each 40 foot container can accommodate up to 4 sets of long reach package 20 ton class excavator, 3 sets for 30 ton class and 2 sets for 40 ton class excavator.

- 1x boom
- 1x boom
- 1x stick/dipper arm
- 1x bucket
- 1x bucket cylinder/ram
- 1x boom yoke pin
- 1 set of Hydraulic pressure hose
- 1 set of linkage
- 2x bucket pin
- 2x bucket link pin

Each long reach package come standard with the following items::



enquiries@floatingplantservices.com
www.floatingplantservices.com

